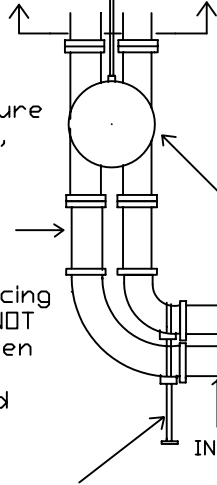


4 WAY DIVERTER VALVE SIZE	METHOD OF INSTALLATION VERTICALLY OR HORIZONTALLY	TYPE OF CONNECTION GROOVE OR FLANGE	QUANTITY
	To be Advised By Customer		
Customer To Follow Instructions In This Drawing			
COMPANY/NAME OF PERSON/SIGNATURE/COMPANY STAMP			

Flow Switch, Pressure Differential Switch, Pressure Transducers, Motorized Valves, Isolating Valves, Butterfly Valves, Flow Meters, Balancing Valves etc MUST BE Installed At This Side of the ATB 4 Way Diverter Valve

4 WAY DIVERTER & PIPEWORK MUST BE PROPERLY SUPPORTED SO THAT WHEN SPOOL PIECE IS REMOVED ATB 4 WAY DIVERTER REMAIN IN POSITION

Flow Switch, Pressure Differential Switch, Pressure Transducers, Motorized Valves, Isolating Valves, Butterfly Valves, Flow Meters, Balancing Valves etc MUST NOT BE Installed Between The ATB 4 Way Diverter Valve And The Condenser



4 WAY DIVERTER VALVE INSTALLED VERTICALLY

2 Pass Condenser

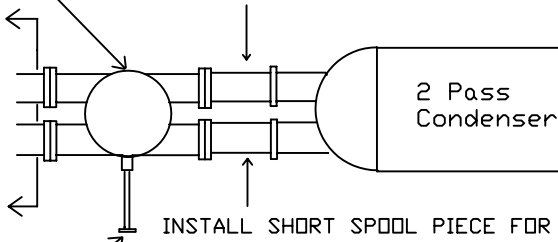
INSTALL SHORT SPOOL PIECE FOR EASY OPENING OF CONDENSER COVER

4 WAY DIVERTER & PIPEWORK MUST BE PROPERLY SUPPORTED SO THAT WHEN SPOOL PIECE IS REMOVED 4 WAY DIVERTER REMAIN IN POSITION

4 WAY DIVERTER VALVE INSTALLED HORIZONTALLY

Flow Switch, Pressure Differential Switch, Pressure Transducers, Motorized Valves, Isolating Valves, Butterfly Valves, Flow Meters, Balancing Valves etc MUST NOT BE Installed Between The ATB 4 Way Diverter Valve And The Condenser

Flow Switch, Pressure Differential Switch, Pressure Transducers, Motorized Valves, Isolating Valves, Butterfly Valves, Flow Meters, Balancing Valves etc MUST BE Installed At This Side of the ATB 4 Way Diverter Valve



INSTALL SHORT SPOOL PIECE FOR EASY OPENING OF CONDENSER COVER

4 WAY DIVERTER & PIPEWORK MUST BE PROPERLY SUPPORTED SO THAT WHEN SPOOL PIECE IS REMOVED, 4 WAY DIVERTER REMAIN IN POSITION

NOTES: Groove End Or Flange Connection Available  
Standard offer is Groove End (Groove End Coupling By Others)

ACMV Pte Ltd  
Automatic Tube Brush

DRAWN BY	SALES ORDER
DATE 04/11/2002	
REVIEWED BY	SCALE
DATE	NTS

TITLE	DRAWING NO.
4 WAY DIVERTER VALVE INSTALLATION	H/0411/2002/R2